



## From the Principal - Ms. Jennifer Reeves



### Welcome Back

It has been a long road, but we are now welcoming students back to Muirfield. Our Year 12 students returned on Monday 18 October. All other years will now return to school full time on Monday 25 October.

We anticipate that some of our students may feel anxious about the prospect of returning to school. Teachers will be checking in with students in their classes. Members of the Student Wellbeing Team, will be out and about with students at break times. It is vital parents keep the lines of communication open and talk with their children.



If you would like some tips or further assistance on talking or supporting your child's return to school, they may be found at the following: <https://education.nsw.gov.au/covid-19/wellbeing-for-students-and-families>

I would like to thank our teachers and support staff for the phenomenal job they have done whilst we have been in the online learning environment. I would also like to put out a special thank you to all our parents who have supported their children in the online learning environment, often whilst working from home themselves. It has been difficult at times, but we have finally come out the other side.

### INSIDE THIS ISSUE

From Ms. Reeves

- Welcome Back
- Our Schools Covid Safe Operations
- Mask Wearing
- Ventilation
- School Activities
- Covid Communication
- Welcome 2022 Student Executive

1-7

Term 4 2021  
New Bell Times

8

Stepping UP in  
September

9

Compliments to  
the Student Chefs

10

2022 School Travel  
Applications are  
now available

11-12

2021 School Year  
Calendar

13

2022 School Year  
Calendar

14



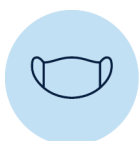
## Our school's COVID-safe operations

As you would be aware, things change quickly. We will email parents whenever protocols or safety operational guidelines are changed in a manner that impacts on your child.

The [DoE parents site](#) provides updated information about the safety protocols. Our COVID-safe return to school plan is NSW Health approved and includes numerous effective practices to support the health and wellbeing of our students and staff. These practices include vaccinations, mask wearing, reduced mingling of student groups and staff, ventilation in classrooms and continued good hygiene and cleaning.

If your child is ill, please keep him/her at home and contact the school to let us know.

Updates about the canteen and uniform shop will be emailed to parents and students.



## Mask wearing for students and staff

Masks are required to be worn on school site by staff and students when indoors. **All students will be expected to supply their own mask.**

Unfortunately, if your child does **NOT** have a mask or will not wear their mask, they will need to be picked up and taken home.



## Keeping student groups together

Students will be allocated playground areas for recess and lunch according to their cohort.

- Year 7 – Year 7 courtyard & around B Block
- Year 8 – C Block and on raised area along back wall of C Block, aligned with the rugby oval
- Year 9 – Quad, rose garden and library steps
- Year 10 – around PDHPE staffroom and between C Block and Basketball courts
- Years 11 and 12 – senior courtyard and along S Block corridors
- BLC – BLC courtyard

The Basketball courts will only be used for PDHPE lessons and will **NOT** be open at recess or lunch.

Students will be reminded to avoid congregating and to maintain physical distancing, where possible.

To ease congestion in the changerooms, students may wear their PE uniform all day on the days they have practical PE lessons. However, if they have practical lessons for other subjects, such as TAS or CAPA, they will be required to have leather shoes to participate in the lesson.

Wednesday afternoon sport for Years 8-10, will be cancelled for the remainder of the term! Alternate activities, that avoid cohorts mingling, will be planned. The Department of Education only allows one cohort in the library at a time.

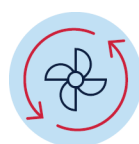
Year groups will be allocated days in which they can have access to the library at recess and lunch for Weeks 4 & 5:

- Year 7 – Monday
- Year 8 – Tuesday
- Year 9 – Wednesday
- Year 10 – Thursday
- Year 11 – Friday

From Week 6, access to the library will be restricted as it is used for HSC exams.

To avoid crowding at the end of the school day, students will be dismissed by blocks. Those waiting for buses that depart from the school bus bay will wait in the quad.

Students who walk home, are picked up or catch buses from the M2 and North Rocks Shopping Centre, will be directed to leave the school site quickly and not to congregate at the front of the school.



## **Ventilation**

To ensure good ventilation, teachers will open windows, where possible, and ensure numbers of people in each space do not exceed the capacity as determined by the ventilation audit.



## **School activities**

During Term 4, many school-based activities will remain on hold until NSW Health advises otherwise. Sport and games that result in physical exertion can only be played in PDHPE classes.

Other activities on hold include assemblies, large celebrations such as presentation night and arts and sports events. Extra-curricular activities, such as band, dance and drama club, and inter-school activities such as knock-outs and gala days are thus not permitted.



## **Covid Communication**

Parents and students will be notified if a decision is made to close the school due to a confirmed case of COVID-19. During this time, we will continue to provide learning from home activities and we will let you know when we can return to face-to-face learning. This communication will come via email and on the Department of Education's website.

### **Welcome 2022 Student Executive**

Congratulations to Muirfield's new school captains, Charlize Walters and Thomas Wilby, and vice-captains, Emily Stoodley and Ray Viko.

Congratulations also to the Student Executive: Joseph Boyd, Alexander Cain, Ashleigh Eagleston, Katya Kombo, Eliza McKenzie, Hritu Saha, Lily Tilt and Ethan Turner.

As student leaders of the school, the Student Executive have many roles; they are the voice of the student body, act as role models and represent the school at many functions. The Student Executive also organise, lead and support whole school events, such as sporting carnivals and fundraisers. They play a key role in developing the leadership of other students by facilitating the two-day Muirfield Leadership Forum where they mentor students in the Student Representative Council.

At the end of Term 3, as part of the process to become a member of the Student Executive, Mr Jankovics, Ms Ansoul, and two outgoing Year 12 student representatives interviewed applicants for Muirfield's 2022 Student Executive. With Term 3 spent learning from home, Ms Ansoul organised online speeches and voting for the positions of captain and vice-captain.



Earlier this term, the Student Executive undertook their first role as leaders in the school through their participation in the Mitchell Youth Leadership Forum. The Forum is a chance for Year 11 leaders from schools across the Mitchell electorate to come together and share thoughts and ideas on how to be great, inspirational leaders in their schools. Student leaders experience the wise knowledge of exceptional leaders and speakers and plan how they will lead the school.

Thank you to Ms Ansoul for her ongoing support and encouragement of student leadership at Muirfield. Thank you also to all the Year 11 students who put themselves forward for the Student Executive; while not everyone was successful, it is heartening to see so many students willing to take up the responsibility of leadership.



## Captains



Charlize



Thomas



Emily



Ray

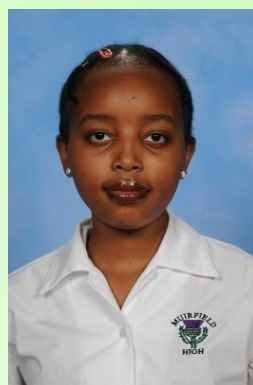
## Leadership Team



Hritu



Joseph



Katya



Ashleigh





## Bell Times Term 4 2021

	Monday, Tuesday, Thursday, Friday Weeks A & B		Wednesday Weeks A & B
Roll Call	8.15am – 8.30am	Staff Meeting	8.00am – 8.45am
Period 1	8.30am – 9.50am	Roll Call	8.45am – 9.00am
Recess	9.50am – 10.05am	Period 1	9.00am – 10.20am
Period 2	10.05am – 11.25am	Recess	10.20am – 10.40am
Period 3	11.25am – 12.45pm	Period 2	10.40am – 12.00pm
Lunch 1	12.45pm – 1.00pm	Lunch 1	12.00pm – 12.17pm
Lunch 2	1.00pm – 1.15pm	Lunch 2	12.17pm – 12.35pm
Period 4	1.15pm – 2.35pm	Period 3	12.35pm – 1.35pm
		Period 4	1.35pm – 2.35pm

NB: A staggered end time, determined by the school, will be in place until further notice.



# Stepping UP in September

In the last two weeks of Term 3, Muirfield students and staff hit the pavement. Teams of students and staff counted and accumulated millions (yes, millions) of steps, competing to see which team could step the most steps.

Teams did not have to physically walk together and given the separation of LGAs, this was not possible for many. But making a commitment to a team, motivated many to a daily walk.

Congratulations to the winning team, the Step Sisters; accumulating 478,838 steps in total, with an average of 159,612 steps each.

This friendly competition helped everyone who participated to safely connect with their friends, get some sunshine, and get active at a time when things were a little difficult.

## Muirfield High School's Stepping Up September Leaderboards Week 1 & 2



Rank	Team Name	Team Members	Team Total	Team Average
1	Step Sisters	Kaley R, Courtney R and Amy O	478,838	159,612
2	Rogue One	Ms Carpenter	87,844	87,844
3	Einstein & Friends	Ms Pasternatsky, Ms Fleet, Ms Ebrahimi, Ms Uppal, Ms Nercessian	413,375	82,675
4	PE Pacemakers	Ms Bligh, Ms Knobbs, Mr Pearson, Ms Purdon, Mr Richter	307,177	61,435
5	Muirfield High Steppers	Ms Reeves, Ms Ogle, Ms Bassett, Ms Towner, Ms King	299,006	59,801
6	Cool Kids Club	Noah Bellrose, James Hayward, Will Zhang, Josh Cotton, Max Zimin, Martin Lo	229,304	38,217
7	Lord of the Steps	Mr Roberts, Ms Dykes, Ms Marsh, Ms Douglas	147,801	38,950
8	Walkie Talkies	Hazel S, Imogen S, Zoe Z, Jackson S, Emily G, Maddie B	204,237	34,039
9	Sizzle Steppers	Abigail A, Evie B, Jayda D, Rosie S	127,623	31,905
10	Step Buddies	Olivia K, Corrine K, Alex C, Luke G, Zac M, Caitlin	171,919	28,653





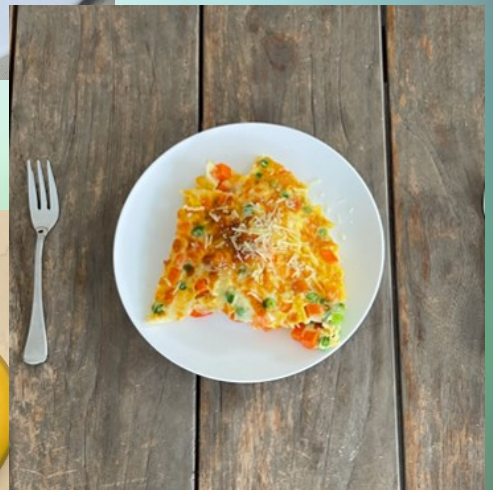
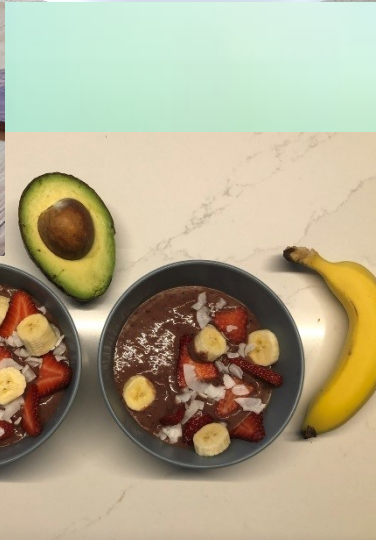
# Compliments to the Student Chefs

Learning from home meant Food Technology teachers brought the joy of cooking directly into the homes of families, providing engaging and purposeful lessons.

Food Technology teachers used video lessons to demonstrate key culinary skills and techniques. Students then put their cooking skills into practice at home, with some amazing results! Parents and carers, impressed with the skill and expertise of their budding chefs, asked the teachers for more recipes.

It has been nourishing to the belly and mind to see so many students and teachers dedicated in continuing to transform their learning and keep practical education alive in this era of online learning.

Hats off to all the student and teacher chefs!



# School Travel for 2022



## 2022 school travel applications are now open

Students who need a School Opal card or travel pass for 2022 can [apply](#) now. A new application will need to be submitted if they are applying for a school travel pass for the first time, or if they are requesting an additional travel entitlement as a result of a new shared parental responsibility situation (e.g. joint custody).

Students who change address, school, campus location, or who have repeated a year or received an expiry notification from Transport for NSW for their school travel entitlement should [renew or update](#) their details before **the end of term 4**. This will ensure that schools can endorse applications and current entitlements are updated and remain valid. School Opal card holders will have the changes applied to their existing card.

If a student's distance eligibility has changed based on their grade the system will automatically update their entitlement if they meet the new criteria. If they do not meet the new [eligibility criteria](#), they will receive an expiry notification via email.

Students who have an entitlement approved under a medical condition that is due to expire will receive a notification advising them to re-apply.

[Term Bus Pass](#) holders will receive a notification to re-apply.

Students in the Opal network applying for an Opal card (including a Term Bus Pass) for the first time will receive their Student Opal card at their nominated postal address. Cards will be mailed out from January 2022.

Students living in rural and regional (R&R) areas should receive their travel pass at the start of the new school year from their nominated transport operator. It may come via the school or be sent directly to them at home. **Note:** some R&R operators do not issue travel passes. Students/parents should confirm with their nominated operator if they do not receive a pass.



## School Student Transport Scheme site change

On 1 October 2021 the School Student Transport Scheme (SSTS) information and application portal was moved to **transportnsw.info**. This will assist families to find all their travel information in the one place.

### Travel from Term 1 2022

We ask that parents plan ahead and make sure their child knows which service/s to use and has a valid ticket to travel; either a School Opal card or Child/Youth Opal card (within Greater Sydney) or a School Travel Pass (outside Greater Sydney), from the start of the school year.

Applications for the School Student Transport Scheme (SSTS) open at the start of Term 4 2021 for travel in 2022, so parents/students can [apply](#) or [update](#) details early and be ready for the start of the new school year.

Most students using the Opal network will not need a new Opal card and can continue travelling on their existing card each year.

The start of the year is a difficult period for local bus operators, and students travelling without a valid ticket make service planning and operations increasingly difficult.

We recognise that for some families last minute changes to school enrolments mean they may not have a School Opal card or Travel Pass for the start of term. In the Opal network, we strongly encourage these families to have their children travel on a Child/Youth Opal card until they receive their valid School Opal card. If outside Greater Sydney, parents should contact their [local bus operator](#) to discuss their travel needs.

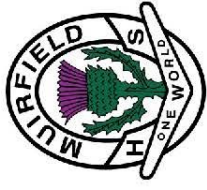
Bus operators are flexible and understanding, particularly at the start of the school year, and will ensure students can travel safely to and from school. But to best support our operators we encourage all students to have a valid ticket, as early as possible, from the start of the school year.

Please also remember that students using Opal cards must tap on and tap off in line with the [Student code of conduct](#) and [Opal terms of use](#).



Further information can be found at [transportnsw.info/travel-info/using-public-transport/school-travel](https://transportnsw.info/travel-info/using-public-transport/school-travel)

Enquiries can be submitted at [transportnsw.info/contact-us/feedback/passes-concessions-feedback](https://transportnsw.info/contact-us/feedback/passes-concessions-feedback)



- Year 7, 11 and 12 return for 2021
- All students return for 2021

# 2021

## School Holidays & Terms

- School Holidays
- Public Holidays
- School Development Days

### January

M	T	W	T	F	S	S
4	5	6	7	8	9	10
11	12	13	14	15	16	17
18	19	20	21	22	23	24
25	26	27	28	29	30	31

### February

M	T	W	T	F	S	S
1	2	3	4	5	6	7
8	9	10	11	12	13	14
15	16	17	18	19	20	21
22	23	24	25	26	27	28

### March

M	T	W	T	F	S	S
1	2	3	4	5	6	7
8	9	10	11	12	13	14
15	16	17	18	19	20	21
22	23	24	25	26	27	28
29	30	31				

### April

M	T	W	T	F	S	S
5	6	7	8	9	10	11
12	13	14	15	16	17	18
19	20	21	22	23	24	25
26	27	28	29	30		

### May

M	T	W	T	F	S	S
3	4	5	6	7	8	9
10	11	12	13	14	15	16
17	18	19	20	21	22	23
24	25	26	27	28	29	30
31						

### June

M	T	W	T	F	S	S
1	2	3	4	5	6	
7	8	9	10	11	12	13
14	15	16	17	18	19	20
21	22	23	24	25	26	27
28	29	30				

### July

M	T	W	T	F	S	S
5	6	7	8	9	10	11
12	13	14	15	16	17	18
19	20	21	22	23	24	25
26	27	28	29	30	31	

### August

M	T	W	T	F	S	S
2	3	4	5	6	7	8
9	10	11	12	13	14	15
16	17	18	19	20	21	22
23	24	25	26	27	28	29
30	31					

### September

M	T	W	T	F	S	S
6	7	8	9	10	11	12
13	14	15	16	17	18	19
20	21	22	23	24	25	26
27	28	29	30			

### October

M	T	W	T	F	S	S
4	5	6	7	8	9	10
11	12	13	14	15	16	17
18	19	20	21	22	23	24
25	26	27	28	29	30	31

### November

M	T	W	T	F	S	S
1	2	3	4	5	6	7
8	9	10	11	12	13	14
15	16	17	18	19	20	21
22	23	24	25	26	27	28
29	30					

### December

M	T	W	T	F	S	S
6	7	8	9	10	11	12
13	14	15	16	17	18	19
20	21	22	23	24	25	26
27	28	29	30	31		





- Year 7, 11 and 12 return for 2022



- All students return for 2022

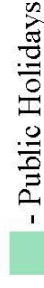


# 2022

## School Holidays & Terms



- School Holidays



- Public Holidays



- School Development Days

### January

M	T	W	T	F	S	S
					1	2
3	4	5	6	7	8	9
10	11	12	13	14	15	16
17	18	19	20	21	22	23
24	25	26	27	28	29	30
31						

### February

M	T	W	T	F	S	S
	1	2	3	4	5	6
7	8	9	10	11	12	13
14	15	16	17	18	19	20
21	22	23	24	25	26	27
28						

### March

M	T	W	T	F	S	S
	1	2	3	4	5	6
7	8	9	10	11	12	13
14	15	16	17	18	19	20
21	22	23	24	25	26	27
28	29	30	31			

### April

M	T	W	T	F	S	S
				1	2	3
4	5	6	7	8	9	10
11	12	13	14	15	16	17
18	19	20	21	22	23	24
25	26	27	28	29	30	

### May

M	T	W	T	F	S	S
						1
2	3	4	5	6	7	8
9	10	11	12	13	14	15
16	17	18	19	20	21	22
23	24	25	26	27	28	29
30	31					

### June

M	T	W	T	F	S	S
		1	2	3	4	5
6	7	8	9	10	11	12
13	14	15	16	17	18	19
20	21	22	23	24	25	26
27	28	29	30			

### July

M	T	W	T	F	S	S
				1	2	3
4	5	6	7	8	9	10
11	12	13	14	15	16	17
18	19	20	21	22	23	24
25	26	27	28	29	30	31

### August

M	T	W	T	F	S	S
1	2	3	4	5	6	7
8	9	10	11	12	13	14
15	16	17	18	19	20	21
22	23	24	25	26	27	28
29	30	31				

### September

M	T	W	T	F	S	S
		1	2	3	4	
5	6	7	8	9	10	11
12	13	14	15	16	17	18
19	20	21	22	23	24	25
26	27	28	29	30		

### October

M	T	W	T	F	S	S
					1	2
3	4	5	6	7	8	9
10	11	12	13	14	15	16
17	18	19	20	21	22	23
24	25	26	27	28	29	30
31						

### November

M	T	W	T	F	S	S
	1	2	3	4	5	6
7	8	9	10	11	12	13
14	15	16	17	18	19	20
21	22	23	24	25	26	27
28	29	30				

### December

M	T	W	T	F	S	S
			1	2	3	4
5	6	7	8	9	10	11
12	13	14	15	16	17	18
19	20	21	22	23	24	25
26	27	28	29	30	31	

2023 Term 1 - 27<sup>th</sup> January to 6<sup>th</sup> April, Term 2 - 24<sup>th</sup> April to 30<sup>th</sup> June, Term 3 - 17<sup>th</sup> July to 22<sup>nd</sup> September, Term 4 - 9<sup>th</sup> October to 19<sup>th</sup> December

# INTERESTED IN LEARNING HOW TO PLAY BADMINTON?



✓ GIVE US A CALL NOW ON  
**0421 532 882** ✓

## 50% OFF

the beginners course by providing us with the  
**PROMOCODE BELOW!**

**FLY808**

📞 0421 532 882

[www.aba08.com.au](http://www.aba08.com.au) 📧 [aba@aba08.com.au](mailto:aba@aba08.com.au)



# GKKARATE

KARATE FOR EVERYONE



## START KARATE NOW!

& RECEIVE A FREE UNIFORM + DISCOUNTED JOINING FEE

CONFIDENCE • FOCUS • DISCIPLINE • FUN

Scan QR code for Information Request  
Or Call Vanessa 0400 174 355 or Allan 0411 704 812



GKR Karate Sports Foundation is focused on helping children get into sporting activities.

Child Safety & Empowerment are core values for us all.

Enjoy & Learn as a family!!

The Sports Foundation will be partnering up with local schools & covering the  
cost of the Karate Uniform plus subsidising the Lifetime Membership Fee.

All this for only \$50 Normally \$155



# Kirstar

Dance



**Enrol  
Now!**

Exciting local dance school  
committed to ensuring every dancer  
has a fulfilling experience!  
Since 2003.

- Warm, friendly, community-centered environment
- High quality teaching
- Most affordable local dance school
- No uniform to buy, discounts for families

**1ST WEEK  
FREE!**

For new students



**NORTH ROCKS**  
Muirfield High School  
Dance Room  
Monday afternoons

Contact Kirsty

[kirstardance@gmail.com](mailto:kirstardance@gmail.com)

0432663884

[kirstardance.com.au](http://kirstardance.com.au)

## COME & PLAY WITH US!

North Rocks Soccer Club invites girls and boys, to come and play soccer for their local club which plays in the Hills Football Association. All age groups and standards accommodated. To be eligible, players must be turning at least five years old during the calendar year of the playing season (i.e 1 Jan-31 Dec). The Club also has a Football-4-All program which we call "Rockerball".



### AGE GROUPS AND PLAYING DAYS

- 5-7 year old boys and girls play in-house on Saturday mornings in a small-sided format. Their fun skills training is provided by a professional training academy.
- 8-12 year old boys and girls play other Hills Football Association clubs on Saturday mornings in a small-sided format.
- Boys/mixed under 13 to 18 play Saturday mornings. All Age Men, Premier League, Over 35 and Over 45s play Saturday afternoons.
- Ladies and girls teams, Under 9 to All Age, play Sundays.
- Over 35 Ladies play Friday nights.

Please don't hesitate to contact us if you have any questions.

**\$100  
Active Kids  
rebate  
voucher  
available\***



Rego  
includes a  
**FREE JERSEY**  
to keep  
6 & 7s ONLY

## JOIN OUR TEAM

REGISTRATIONS NOW OPEN!

[www.nrsfc.com.au](http://www.nrsfc.com.au)





*Tuition That Works!*  
There must be one near you!

Over **60** Campuses in  
NSW / VIC / QLD / WA / ACT / SA & NZ



PRINCIPAL SCHOOL: North Shore House, 65 Archer St, Chatswood NSW 2067

## Over 27 years of Success Stories

### To Reward 2019 OC Successful Students

All students who gained entry  
in an approved OC class in 2019  
can enjoy our

**HALF PRICE  
COURSE FEE\***

Please bring your Opportunity Class offer letter  
upon enrolment. Offer ends 27th Nov 2018.  
\*Terms and Conditions Apply.

### BIG SAVINGS!

Pre-Kindy to Year 6 / Year 7 to Year 12

If Enrolled by **27th Nov 2018**

Holiday Program Starts 7th Jan 2019

Save 50% for the 2nd, 3rd... courses

Term 1 Program Starts 2nd Feb 2019

Save \$40.....Early Bird Discount

Save up to 50% for Multiple Courses / Family Discount

## EXAM SUCCESS

ACER Exam on 23th Feb 2019 / Selective Schools Exam on 14th Mar 2019

**Year 5 → 6** Prepare For Selective School & Scholarship Exams

1. Fastrain Extended Program
2. Extra Mock Tests
3. Writing For Exams Success
4. Personal Presentation & Interview Skills

### NSW Branches:

Free Assessment & Enquiry: (02) 9415 1977 / (02) 9415 1860 / (02) 9415 1955

[www.north-shore.com.au](http://www.north-shore.com.au)

Ashfield - 0410 816 186	Burwood - 02 8065 4805	Castle Hill - 0410 715 136	Hurstville - 0478 398 200	Rosebery - 0411 763 758	ACT - 0431 999 544	VIC - 03 9898 9880
Bankstown - 0434 658 369	Cabramatta - 0419 180 147	Chatswood - 02 9415 1860	Kogarah - 0478 398 200	St Ives - 0401 078 766	QLD - 07 3343 1883	WA - 08 9328 8228
Bella Vista - 0422 564 943	Carlingford - 0425 171 324	Eastwood - 0431 626 619	Lidcombe - 02 9649 2959	Surry Hills - 0403 076 636		
Beverly Hills - 0478 398 200	Campbelltown - 0425 242 191	Epping - 0404 088 574	Parramatta - 0478 841 982	The Ponds - 0481 308 999		
Blacktown - 0450 480 991	Campsie - 0432 810 282	Hornsby - 0401 744 551	Randwick - 0420 566 134	Wentworthville - 0423 284 406		

## JUMP PERFORMING ARTS

[WWW.JUMPPA.COM.AU](http://WWW.JUMPPA.COM.AU)

Muirfield High School Dance Room

HIP HOP  
CONTEMPORARY  
BALLET



TAP

JAZZ

ACROBATICS

